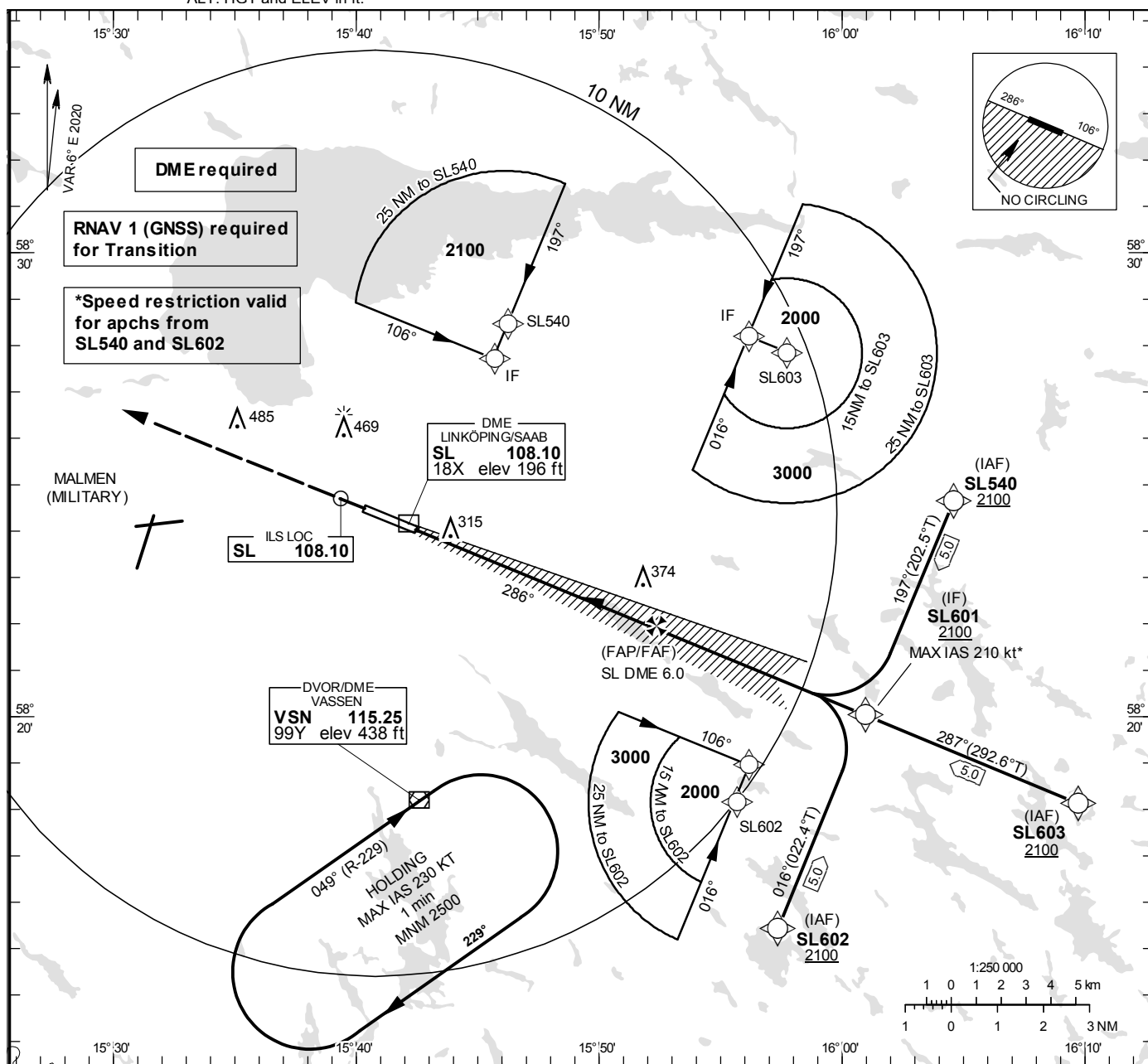


**LINKÖPING/Saab**  
**ILS or LOC RWY 29**

**INSTRUMENT  
APPROACH  
CHART – ICAO**

THR ELEV 177.9 ft, AD ELEV 178 ft  
OCH are related to THR.  
Circling OCH are related to AD ELEV.  
BRG are MAG  
ALT. HGT and ELEV in ft.

SAAB TOWER	118.805
ÖSTGÖTA APPROACH	132.955
	135.850



TA 5000 ft AMSL					RDH 54.1 ft					* Timing not authorized for defining the MAPt				
OM replaced by SL DME 4.0 MM replaced by SL DME 0.8										LOC FAF at SL DME 6.0 2100 MAPt at SL DME 0.8 Descent grad 5.2% (3.0°)				
CLIMB STRAIGHT AHEAD TO 2500, RADAR VECTORING FOR NEW APPROACH					From RNAV transition or radar vectoring									
5 0 5 10 15 NM														
OCA (H)					Final approach		LOC Distance FAF-MAPt 5.2 NM*							
Cat of ACFT		A	B	C	D	DME SL NM	2		3		4		5	
Straight-in Approach	CAT I	374(196)	380(202)	396(218)	405(227)	ALT	820		1140		1450		1770	
	LOC	620(450)				GS	kt	80	100	120	140	160	180	
Circling NE RWY		770(600)	770(600)	880(710)	880(710)	Time	min:s	3:54	3:07	2:36	2:14	1:57	1:44	
Circling Cat D Max IAS 200 kt					Rate of descent	ft/min	425	530	635	745	850	955		